

### INSTALL AREA

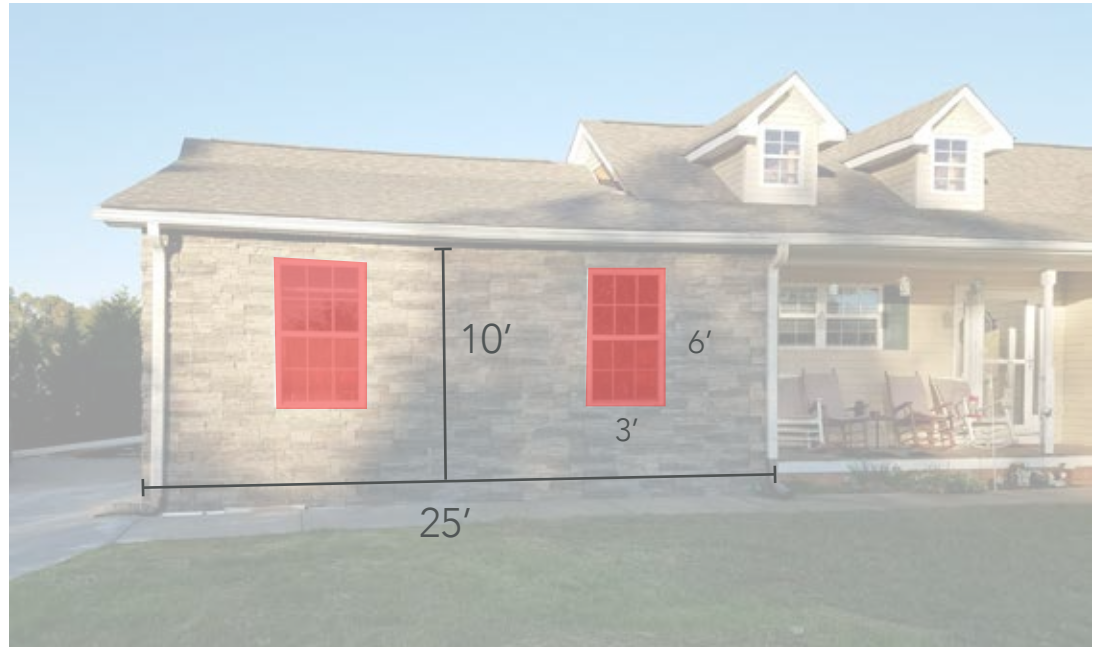
Find the total square footage:

$$25 \times 10 = 250 \text{ SQFT}$$

### SUBTRACT VOIDS

Square footage of the windows:

$$3 \times 6 \times 2 = 36 \text{ SQFT}$$

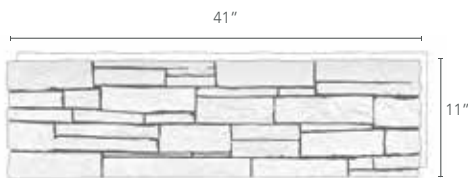


### INSTALL AREA

$$250 - 36 = 214 \text{ SQFT}$$

### STACKED STONE

FULL PANEL (3.13 SQFT)



#### PANELS NEEDED

$$214 / 3.13 = 68.37 \text{ panels round up to } 69$$

#### RECOMMENDED EXTRA 5%

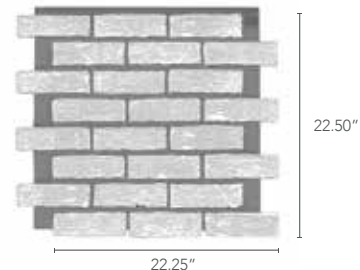
$$69 \times 1.05 = 72 \text{ Panels}$$

#### CAULKING AND PAINT KITS

3 Big Stretch (1 every 100 SQFT)  
1 Color Match Caulking (1 every 400 SQFT)  
1 Paint Kit (1 every 400 SQFT)  
+1 Paint Kit (mix with the tintable caulking)

### BRICK

FULL PANEL (3.61 SQFT)



#### PANELS NEEDED

$$214 / 3.61 = 59.27 \text{ panels round up to } 60$$

#### RECOMMENDED EXTRA 5%

$$60 \times 1.05 = 63 \text{ Panels}$$

#### CAULKING AND PAINT KITS

3 Big Stretch (1 every 100 SQFT)  
1 Color Match Caulking (1 every 400 SQFT)  
1 Paint Kit (1 every 400 SQFT)  
+1 Paint Kit (mix with the tintable caulking)