

GenStone®

# Pillars

How to Install  
Made Easy System

(1) MEASURE (2) CUT WITH ANY SAW (3) ATTACH

## REQUIRED FOR ALL EXTERIOR INSTALLATIONS

- Hand Saw
- Utility Knife
- Tape Measure
- Caulking Gun for a 10 oz Tube
- 1.625" Non-Corrosive Deck Screws
- 2.50" Non Corrosive Deck Screw for Ledgers
- Sandpaper
- PL Adhesive (200 or 300 is recommended)
- Level
- Drill
- Screw Driver Bits
- Framing Square
- Marker
- Gloves
- Safety Goggles and Glasses
- Big Stretch White Caulking

## RECOMMENDED FOR EXTERIOR INSTALLATIONS

- Tyvek HomeWrap
- Circular or Table Saw
- GenStone Color Match Caulking
- GenStone Paint Kits

## REQUIRED FOR OVER BRICK, CONCRETE AND STUCCO

- Tyvek HomeWrap
- Tapcon Fasteners

## REQUIRED FOR INTERIOR OVER DRYWALL

- Hand Saw
- Utility Knife
- Tape Measure
- Caulking Gun for a 10 oz Tube
- 2" Drywall Screws
- Level
- Sandpaper
- Drill
- Screw Driver Bits
- Framing Square
- Marker
- Gloves
- Safety Goggles and Glasses
- Big Stretch White Caulking

**NOTE:** PL Adhesive or any other construction adhesive is not recommended for interior projects

## RECOMMENDED FOR INTERIOR INSTALLATIONS

- GenStone Color Match Caulking
- GenStone Paint Kits

## PAINT KITS AND CAULKING

<b>Color Match Caulking</b>	One tube for every 400 SQFT of GenStone installed
<b>Big Stretch Caulking</b>	One tube for every 100 SQFT of GenStone installed
<b>PL 3x Adhesive</b>	One 10oz tube for every 100 SQFT or One 28oz tube for every 200 SQFT of GenStone
<b>Paint Kits</b>	One paint kit for every 400 SQFT of GenStone installed

# PROJECT SOS

📞 1-855-397-1294    ✉️ [info@genstone.com](mailto:info@genstone.com)

🌐 [genstone.com/project-sos](http://genstone.com/project-sos)

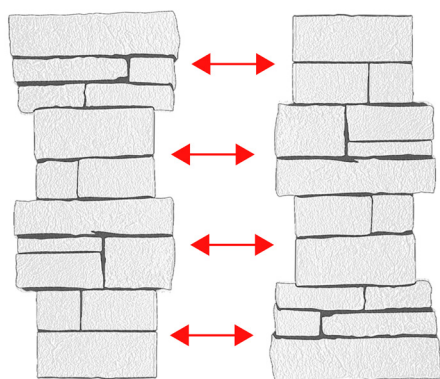
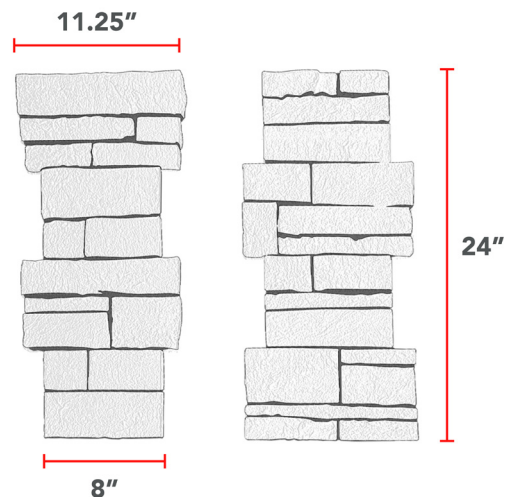
# GenStone®

## APPLICATION

GenStone Pillar Panels are designed for install on an 8 inch x 8 inch square post. Each panel is 24 inches tall and can be stacked vertically for installations taller than 24 inches or cut down for installs shorter than 24 inches.

### Tips for Success

- Let your panels acclimate for 48 hours
- Wait for a days of consecutive moderate temps
- Always paint exposed raw material left by cuts
- Post should be 7.75" to 8" on each side

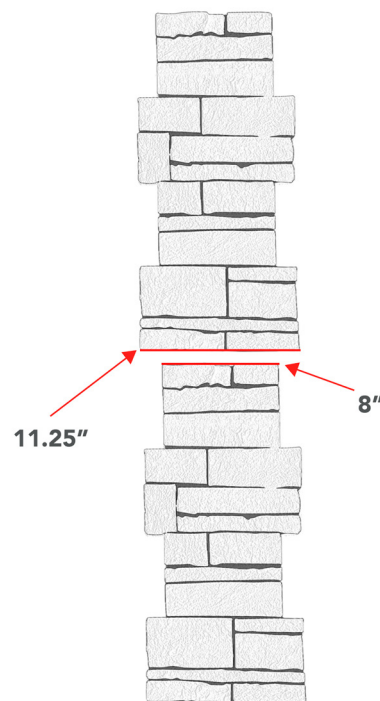


## HORIZONTAL CONNECTIONS

As you install the panels horizontally across your post, every other panel should be inverted as pictured.

## VERTICAL CONNECTIONS

The panels can be stacked vertically as high as necessary. Each vertical row should mirror the row directly below with the 8" section connecting to the 11.25" section.



### Post Sizes and Recommended Products

Furring strips can be used to resize a post to fit the pillar panels or other post and column solutions from GenStone.

- 0" to 8" GenStone Pillar Panels
- 8" to 17" GenStone 90° Outside Corners
- 17"+ GenStone Panels and 90° Outside Corners

# PROJECT SOS

📞 1-855-397-1294    ✉ info@genstone.com

🌐 genstone.com/project-sos

# GenStone®

## PILLAR PANEL INSTALLATION



### STEP 1: Level for Install

Never level your install with the ground, always use a level to draw a level line where the top of the first row of panels will end.



### STEP 2: Continue the Level Line

Use a square or similar straight edge to extend the level line on each side of the post. It is only necessary to do steps 1 and 2 for the first row, all other rows will follow.



### STEP 3: Attaching the Panels

Place a bead of PL Premium 3x adhesive on the back of each panel in an "S" pattern. Select areas where you can hide the screws in the shadows of the rocks and carefully fasten the screws to ensure the screw is not pulled past the face of the panel.

Use GenStone eXact Color caulking to caulk the connection points with the next panel and conceal the face screws. GenStone Big Stretch can also be used for the connections.

### STEP 4: Secure Panel Connections

After the current row is complete, find a rock shadow on the two 11.25" sections and use a screw to firmly connect the adjacent panels to one another.

Use GenStone eXact Color or Big Stretch caulking to caulk the connection between the top of the panel and the post and the top of the panel to the next row of panels.



# PROJECT SOS

☎ 1-855-397-1294 ✉ [info@genstone.com](mailto:info@genstone.com)

🌐 [genstone.com/project-sos](http://genstone.com/project-sos)

# GenStone®



## FLAT PILLAR CAPS



### Flat Cap Overview: Profile

The Flat Pillar Cap is 13" x 13" square and is defined by its 5" x 5" flat square in the middle of the cap. From the flat center, the cap slopes slightly in all 4 directions.

### Use Case 1: Pillar Cap

This cap can be used to finish the top of the Pillar Panel install. The inside of the cap is designed to install flush on top of the installed panels and structural post. The cap is installed with PL Premium 3x Adhesive on the connection points with the post and screws in the top of the cap. The screw holes can be concealed with GenStone eXact Color caulking and paint.

### Use Case 2: Pillar Pass Through

The Flat Cap is the preferred choice for installations where the post will continue on through the top of the cap. The GenStone Peaked Pillar Cap is not recommended for this use case.

Please continue on to the next page for instructions on how to create a void for a post pass through in the top of the cap.



# PROJECT SOS

📞 1-855-397-1294    ✉️ [info@genstone.com](mailto:info@genstone.com)

🌐 [genstone.com/project-sos](http://genstone.com/project-sos)

# GenStone®

## FLAT PILLAR CAP PILLAR PASS THROUGH



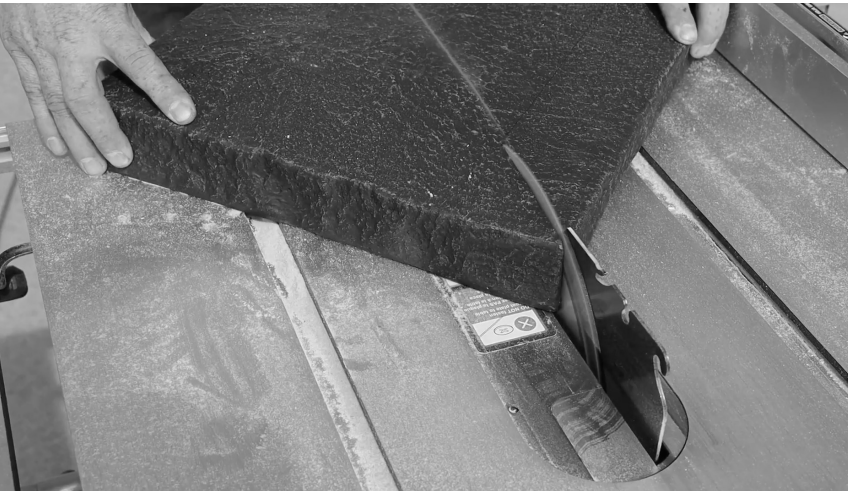
### STEP 1: Flat Cap Check

Double check that you purchased the Flat Pillar Cap rather than the Peaked Pillar Cap.



### STEP 2: Outline Your Post

Use a marker to draw an outline of the post on the bottom of the cap. Draw another dotted line slightly to inside of the solid line.



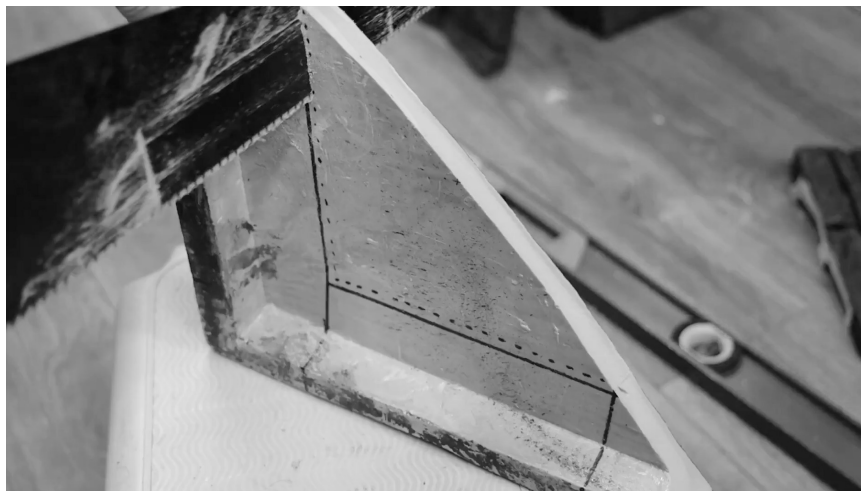
### STEP 3: Cut the Cap

Use any power or hand saw to cut the cap exactly in half. You can follow the seam on the top of the cap to ensure the cap is split directly down the middle diagonally.

### STEP 4: Creating the Void

Use a hand saw to cut along the dotted line on both sides of the cap.

Although the post may extend out to the solid line, it's recommended the remainder of the cut is created with a file or sand paper to ensure a tight fit between the cap and the post.



# PROJECT SOS

📞 1-855-397-1294    ✉ info@genstone.com

🌐 [genstone.com/project-sos](http://genstone.com/project-sos)

# GenStone®



## FLAT PILLAR CAP PILLAR PASS THROUGH CONTINUED



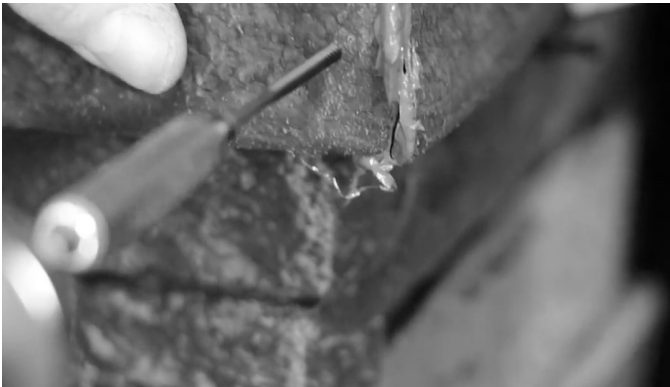
### STEP 5: Check for Fit

Make sure both sides of the cap connect.



### STEP 6: Caulk the Connections

The caulking should seep from the top of the connection when placed around the post.



### STEP 7: Connect the Cap

Carefully insert one screw in each connection and cover the screw with GenStone eXact Color caulking.



### STEP 7: Secure the Cap

Insert two screws diagonally into each side of the cap connecting the cap to the post.



### STEP 8: Caulk the Connection

Run a bead of GenStone eXact Color caulking in the void between the cap and the post on all sides.



### STEP 9: Smooth the Caulking and Paint

Using a glove or paper towel, smooth the caulking and wait for the caulk to dry before painting.

# PROJECT SOS

📞 1-855-397-1294    ✉ info@genstone.com

🌐 [genstone.com/project-sos](http://genstone.com/project-sos)

# GenStone®

## PEAKED PILLAR CAP



### Peaked Cap Overview: Profile

The Peaked Pillar Cap is 13" x 13" square and is defined by its elevated peak in the middle of the cap. From the peaked center, the cap slopes slightly in all 4 directions.

### Peaked Pillar Cap

#### Use Case: Pillar Cap

The inside of the cap is designed to install flush on top of the installed panels and structural post. The cap is installed with PL Premium 3x Adhesive on the connection points with the post and screws in the top of the cap. The screw holes can be concealed with GenStone eXact Color caulking and paint.



### Recommended Uses

The GenStone Pillar Caps are intended for use with the GenStone Pillar Panels. GenStone does not recommend the caps are used in any circumstance where the cap will be sat upon or stepped on.

# PROJECT SOS

📞 1-855-397-1294    ✉️ [info@genstone.com](mailto:info@genstone.com)

🌐 [genstone.com/project-sos](http://genstone.com/project-sos)

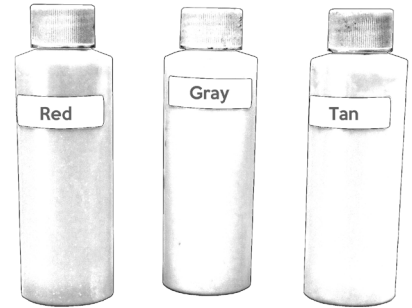
# GenStone®

## FINISHING TOUCHES

After all of your panels and caps are securely fastened, go back and conceal any fastener holes in the face of the Products with a GenStone eXact Color caulking and paint kit.

### HOW TO TINT THE CAULKING

Follow the step by step video found on the GenStone website ([genstone.com](http://genstone.com)) to tint the color match caulking. The caps will require only one of the base colors, while the stone pieces require a combination of all paints provided in the kit. For larger projects, dedicated eXact Color caulking kits are suggested for the stone and caps.



### USING A PAINT KIT TO BLEND THE CAULKING

After concealing the fastener holes with the color match caulking, wait for the caulking to dry before painting the caulk. We recommend mixing a combination of the paint colors provided in a separate paper or plastic bowls, one for stone touch ups and one for ledger touch ups. The paint is intended to create a perfect blend between the colors around the fastener holes you concealed and the surrounding colors of the Products.

### PAINTING EXPOSED UNPAINTED RAW MATERIAL

Any exposed raw material must be painted thoroughly. Unpainted material will discolor when exposed to sunlight for an extended period of time. You may find exposed raw material where you have cut the GenStone Products.

## SPECIAL CONSIDERATIONS

<b>Warranty</b>	Failure to follow these installation instructions will void the 25 year limited warranty.
<b>Heat Sources</b>	If you can hold your hand on the surface where you plan to install GenStone for 10 seconds while the heat source is running, GenStone is OK to be installed on that surface, if not, GenStone is not recommended for the area. It is the owner's sole responsibility to ensure all panels and accessories will not come in contact with flames or embers.
<b>Attaching</b>	For exterior projects, premium construction adhesive is required on the back of all panels, ledgers and trim. Fasteners are required for both exterior and interior projects.
<b>Maintenance</b>	GenStone will perform similar to wood siding in most climates. Follow the GenStone Use and Care guide and examine your GenStone once per year for any sign of discoloration.
<b>Building Codes</b>	Review your local building code prior to installing GenStone. Strapping may be required for exterior installations in Canada.

# PROJECT SOS

☎ 1-855-397-1294    ✉ [info@genstone.com](mailto:info@genstone.com)

🌐 [genstone.com/project-sos](http://genstone.com/project-sos)

# GenStone®